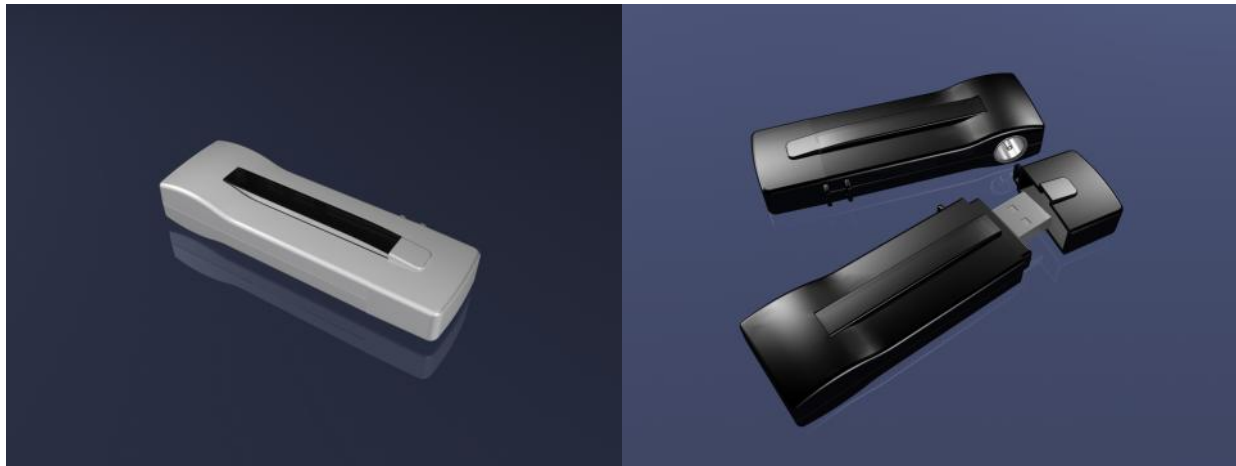


USB 2.0 Analog TV Dongle



Features

- Watch Analog TV on your Notebooks and PCs
- PenDrive Size USB TV receiver
- Support Worldwide Analog TV Receptions (NTSC / PAL / SECAM)
- USB Bus Power, no Extra Power required
- MCE (Windows Media Center) compatible (a MCE compatible MPEG encoder is required)
* MCE encoder is optional
- **ArcSoft TotalMedia Software** : User-Friendly interface with powerful functions
 - Analog TV support
 - Auto Channel Scan
 - Supports Real-time video recording in MPEG-2 format.
 - Time-Shifting and Scheduled Recording function
 - Multiple Channel Preview
 - Edit the Video and Photo files with a simplified operation.
 - Create beautiful slide show presentations for work or fun .



Specifications:

Interface	USB 2.0	
Analog TV	TV Standards	NTSC, PAL, and SECAM
	Tuner systems	(B, G, H, D, K, I, M, N, L, and L')
	TV Channel	CATV, VHF/UHF
IR Dimension	Remote Control	Infrared Remote Control
	TV Dongle	8.2 X 2.8 X 1.5 cm (L X W X H)
Weight	Device Net Weight	Approx. 20 g

Accessories (Package Contents)

- USB 2.0 Analog TV Dongle
- IEC To F Plug converter
- Remote Control
- Quick Installation Guide
- Software CD (Driver, TotalMedia)

System Requirements

- Windows® XP(SP2) / VISTA
- Pentium® IV 1.2 GHz or above (P IV 1.6 GHz or higher is recommended)
- 256MB RAM (512MB DDR RAM recommended)
- Graphics card (Must support Microsoft DirectX 9.0 or above)
- Sound card (AC97 compatible sound card)
- One available USB 2.0 port
- 250 MB (for software installation use)
- 1GB free HD space (For TV recording use)
- CD-ROM drive (For software installation)
- Microsoft DirectX 9.0c or above

Optional : For Microsoft Media Center, Time-shifting and MPEG 2 capturing

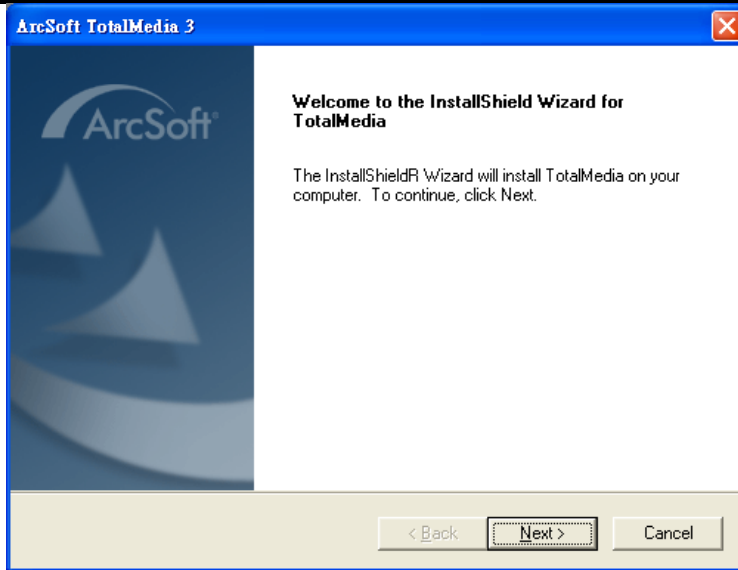
- Intel Pentium IV 3.0GHz
- 512MB RAM or above
- Graphics Card (Windows XP MCE 2005 certificated / Windows Vista certificated for Vista)
- A Vista compatible Sound Card
- Free HD space for recording
(e.g. record 1 hour programs into MPEG2 files takes around 1.8G)
- Windows Vista Premium or above
* Analog TV on MCE, a MCE encoder is required

Software Installation

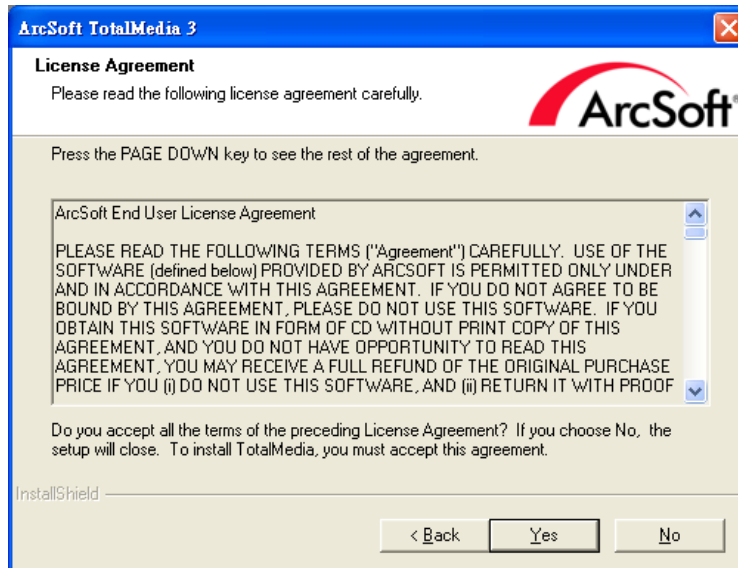
1. Click the “Arcsoft Total Media” option on the Autorun page to install Total Media s software. If the installation does not automatically start, please go to the directory of “E:\TotalMedia 3” and execute "**setup.exe**" to install the software - if E:\ is your CD Rom drive.
2. Please choose your favorite language.



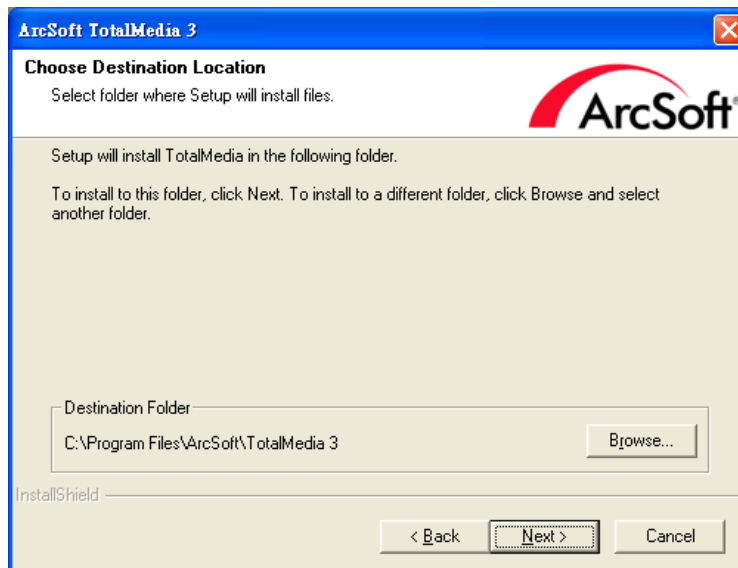
3. Click “Next”



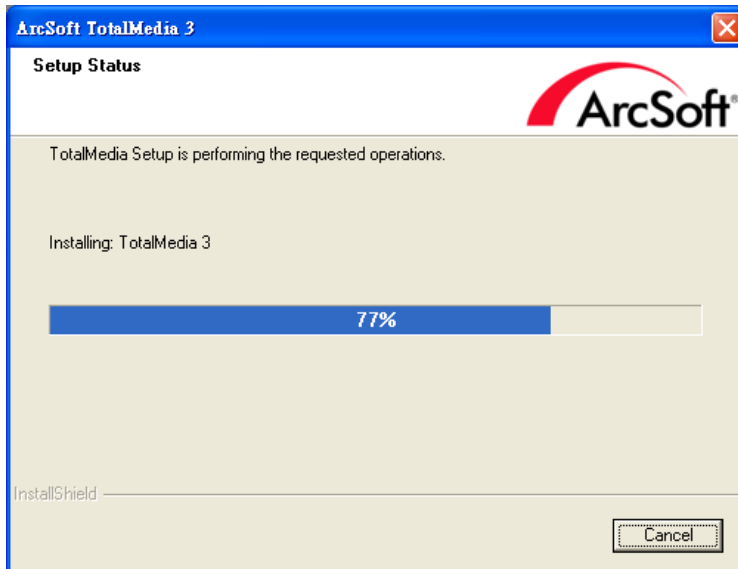
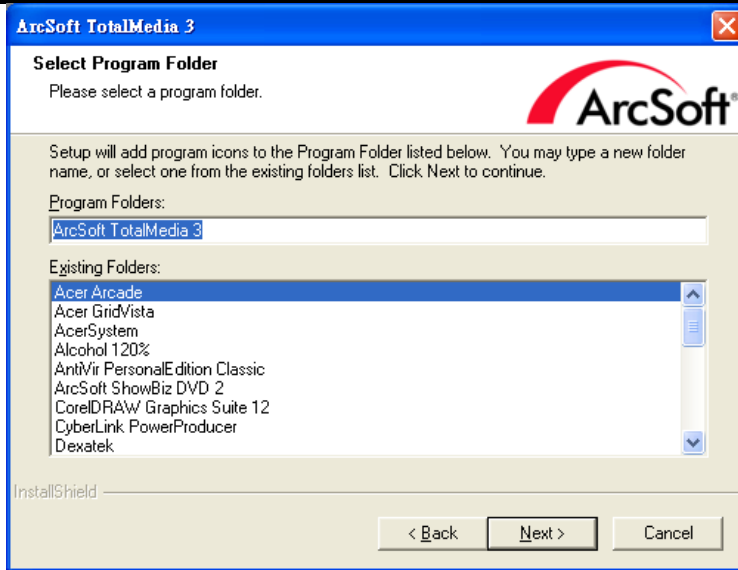
4. Click "Yes"



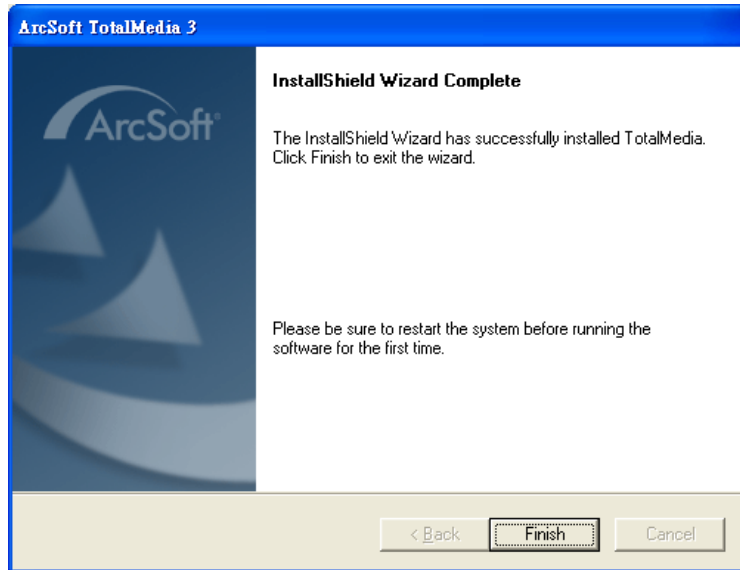
5. Click "Next"



6. Click "Next"



7. Click "Finish" to finish the software installation



Total Media User Manual

1. Double click the "Manual" option on the Autorun page. It will automatically open the "Manual".
2. Please choose your favorite language for operational reference.